

## Vocal Ranges

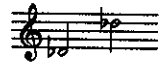
**POLLY**



**BOBBY**



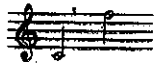
**EVERETT**



**IRENE**



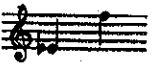
**ZANGLER**



**LANK**



**PATRICIA**



**EUGENE**



**COWBOY TRIO** [MOOSE, MINGO, and SAM]

**MALE QUARTET** [HARRY, JUNIOR, WYATT, and MINGO]

**CHORUS** [S-A-T-B]

## Instrumentation

- Reed 1 - Piccolo, Flute, Clarinet, Soprano & Alto Saxophone.
- Reed 2 - Piccolo, Flute, Eb Clarinet (or Bb Clarinet), Clarinet, Alto Saxophone and Ocarina in C (or Pennywhistle in G).
- Reed 3 - Oboe, English Horn, Clarinet and Tenor Saxophone.
- Reed 4 - Piccolo, Flute, Clarinet, Bass Clarinet and Tenor Saxophone.
- Reed 5 - Bassoon, Bass Clarinet and Baritone Saxophone.

Horn 1 & 2

Trumpet 1 & 2 (1st doubling Piccolo Trumpet)

Trombone 1 (Tenor Trombone)

Trombone 2 (Bass Trombone doubling Tuba)

Percussion 1 & 2 (trap drum set & mallet instruments)

Guitar (doubling Banjo)

Piano (Keyboard Synthesizer—principally rhythm piano;  
includes registrations for Harp, Celeste, Saloon Piano, etc.)

Violins (3 stands)

Cello (1 stand)

Bass

String Substitute Synthesizer (A Keyboard part that may be used to substitute for the Violins and Cello parts in the orchestration.)

*Note: Measure numbers may not be consecutive due to changes made during the tryout period.*